



# MONOVAN

FAT FREE VAN BODIES

Distributed By



Our truck body panels are a unique, lightweight composite sandwich panel made of polypropylene honeycomb with a face sheet made of Twintex®, a fibre reinforced polypropylene weave, fused on to each side of the honeycomb. Another thin layer on top of the Twintex® gives the surface a smooth finish.



MonoVan currently offers two different body styles ranging from 12 ft to 26ft:

1. Dry Freight Van Bodies



2. Insulated Van Bodies



## Features and Benefits of MonoVan...

### 1. **Lighter**

- Weighs approximately 2100lb less than a traditional 24ft dry freight van (based on published weights)

### 1. **Stronger and more Durable**

- The panels are impervious to the elements and highly impact resilient
- The panels will never rust

### 1. **Environmentally Responsible**

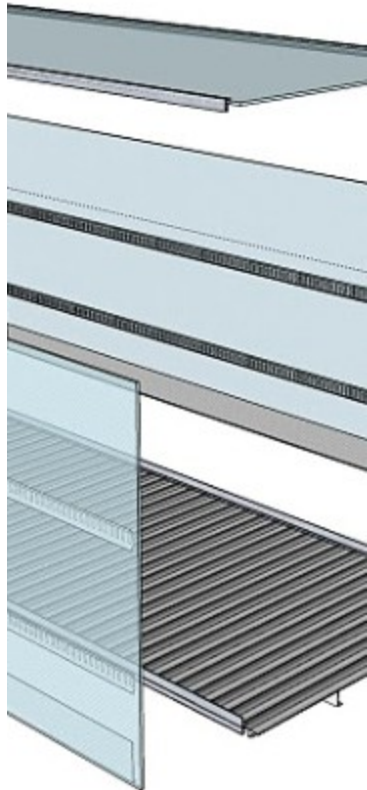
- Reduces fuel consumption and GHG emissions
- Increased payload increases operating efficiency
- Made from 100% recyclable materials

### 1. **More Cost-Effective**

- Lower Fuel Consumption + Greater Payload + Competitive Advantage + Higher Resale Value + Lower Maintenance Cost + Longer Lasting Materials = **Higher Profits**

# MonoVan Kit Assembly

Our light-weighting truck kits are prepared with ease of assembly and mounting in mind. For each kit, everything you need for assembly and mounting is provided:



1. Floor Assembly with holes pre-drilled in lower rail for wall mounting
2. Front Panel
3. Side Panels with logistic track installed
4. Roof Assembly with extrusions, wiring and lighting pre-installed
5. Rear frame pre assembled with integrated door track
6. Pre assembled roll up door
7. Under-ride
8. Sealant and adhesive
9. Rivets, fasteners and U-bolts

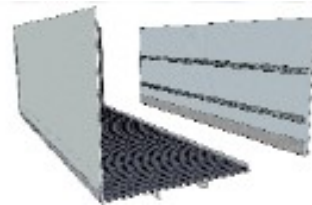
# MonoVan Kit Assembly

Following a few basic steps, assembly of the kit usually takes a two man team approximately three hours (six man hours) before the assembled truck body is ready for mounting. Tools needed are those that are typically found in most service centres.

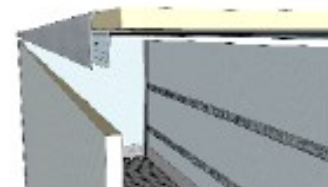
**Step 1**



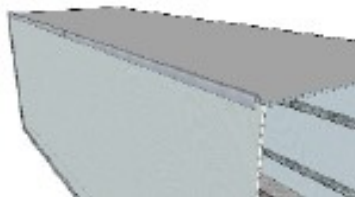
**Step 2**



**Step 3**



**Step 4**



**Step 5**



**Step 6**



# North America

- Large fleet operators are beginning to take advantage of lightweight truck bodies.
- Initially driven to reduce their Carbon Footprint, operators are finding lightweight truck bodies to be very cost effective.



MonoVan is brought to you by:  
Efficient Transportation Solutions (ETS)



ETS offers innovative solutions to transportation companies increasing both their environmental responsibility and profitability



Contact:

Efficient Transportation Solutions

905-594-1235

[www.etransportationsolutions.com](http://www.etransportationsolutions.com)

[admin@etransportationsolutions.com](mailto:admin@etransportationsolutions.com)